

# HOPEN

HOPEN is a strong bridge between the words HOPE and OPEN. It also contains HOP from hip-hop, EN from English and PEN. How HOPEN are you?

# HOPEN

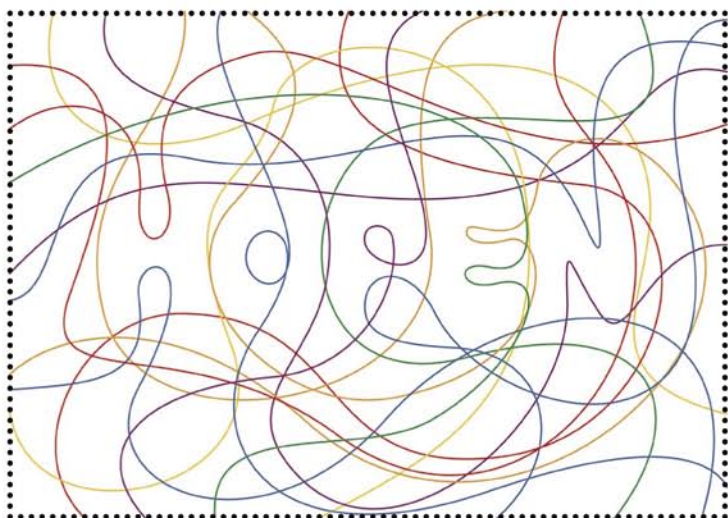
We may think we are HOPEN when we are aware of all the ideas circulating around us - we are not HOPEN yet.

# HOPEN

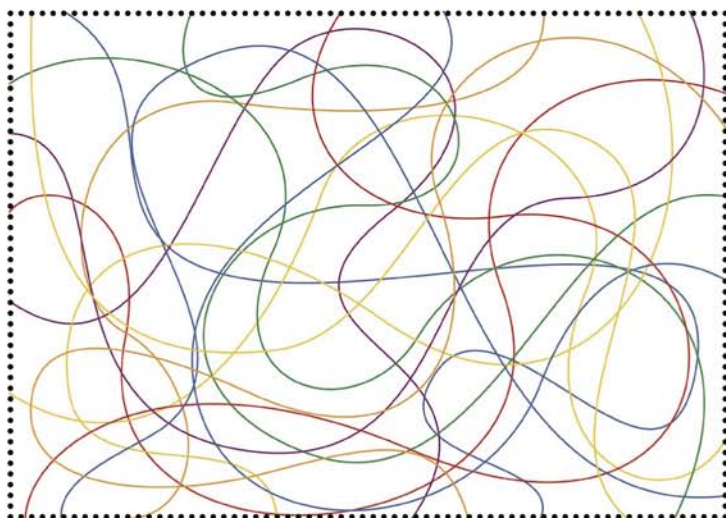
We think just because we have learned to open ourselves towards the inside and meditate, that we are HOPEN?

# HOPEN

To be truly HOPEN we must use our bodies as the instruments to materialize our ideas.



The absence of ego.



Absolute flow. DOSSIER: CONNECTING-STOCKHOLM

ON





The western society of the XX century can be seen as bipolar. To say negative is bad and positive is good is like saying the night is bad and the day is good - when one is the continuation of the other.



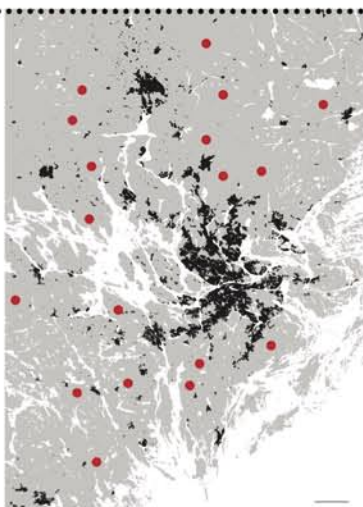
The Mayan symbol of the Aquarius era is a double wave: a connected flow oscillating between positive and negative. Notice a third wave of optimum balance in white flowing inside the existing black. Balance and stability come from minimizing the distance between poles.



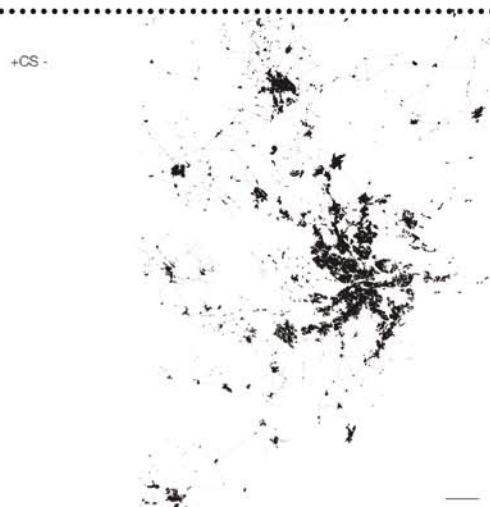
Yona Friedman's Continent City redrawn only with connections over land between the main cities of Europe. Imagine a trans-national network of equilibrium between nations, a continuous fade in and out of time and site specific cultures that help each other. EU?



Connecting-Sweden. One does not have to travel to all main villages of Sweden to know they exist. The people who hold the answers to our problems may be closer to us than we think. We still need to know how to use the power of our own network to evolve.



In the absence of efficient public participation on the current plan for the region of Stockholm, the government will continue to plant segregated suburbs far away from each other. The lack of *social-spaghetti* fuels oil dependency, alienation, loneliness and fear.



Instead, could we frame the future growth of Stockholm onto bridge-villages which connect the currently disconnected suburbs? Thus, in 200 years we could in fact turn a segregated city into a network city...

# ME WE

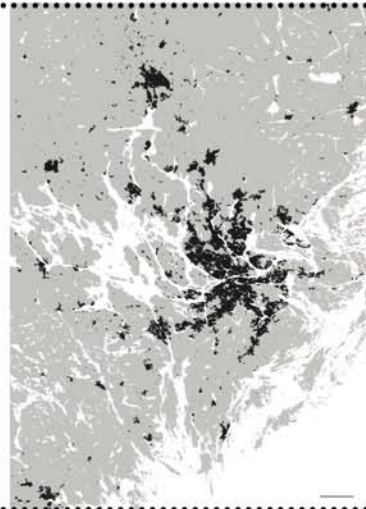
The word WE is the evolution of the word ME. "Eventually everything connects - people, ideas, objects. The quality of the connections is the key to quality per se." Charles Eames



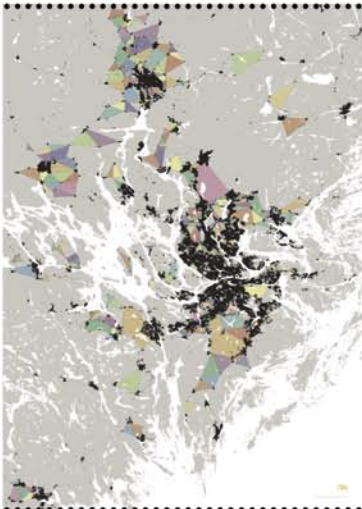
Buckminster Fuller's Dymaxion map from 1946 is an unfolded origami structure of planet Earth. The map shows that the world consists of one continent surrounded by one ocean. This is the map we should be using in schools to teach our children that we are in this together.



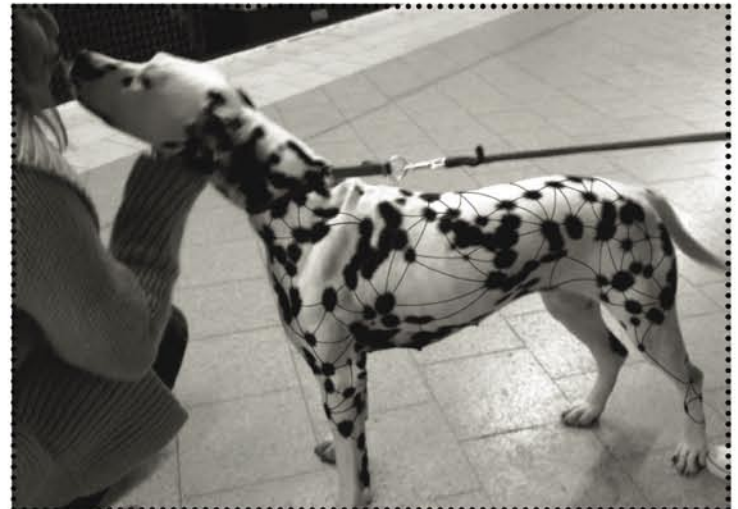
In 1802 the urban area of Stockholm was concentrated to a very small, high density area in Gamla Stan, including pieces of Norrmalm and Södermalm. Small villages and farms were scattered throughout the region.



200 years later: in white, water; in grey, land; in black, urban. Notice the extreme segregation between isolated communities. The scale on the bottom-right corner shows the distance of 10 Km. Stockholm is considered to be one of the most segregated cities in the world.

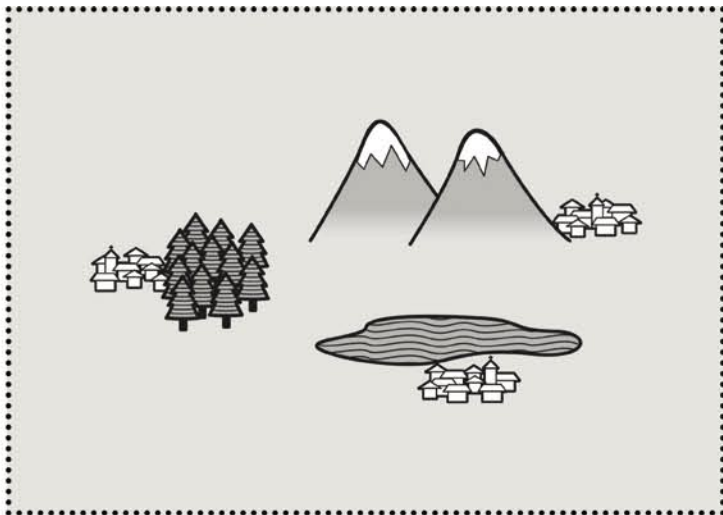


If the space between bridge-villages could become urban agriculture courtyards, Stockholm can become incrementally self-sufficient, minimizing transportation, import and oil dependency. In order to become self-sufficient, people need to re-learn how to grow their own food.

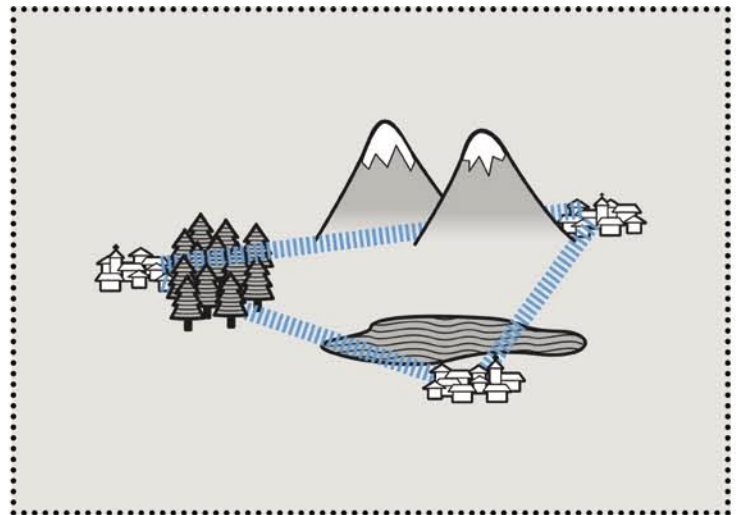


In other words, if Stockholm was a dalmatian dog, could we connect the dots?





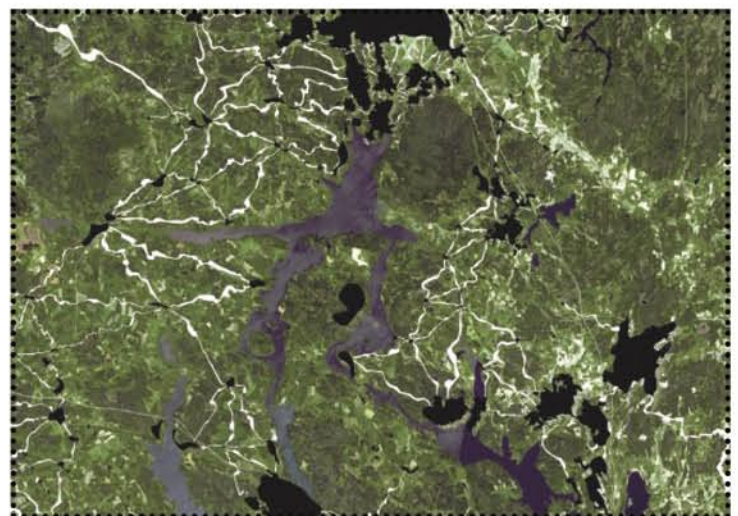
Once upon a time there were three villages: the people from the lake, the people from the forest and the people of the mountains.



Even though there had always been a magnetic connection between these three villages, there was always competition for superiority. Instead of letting these villages implode...



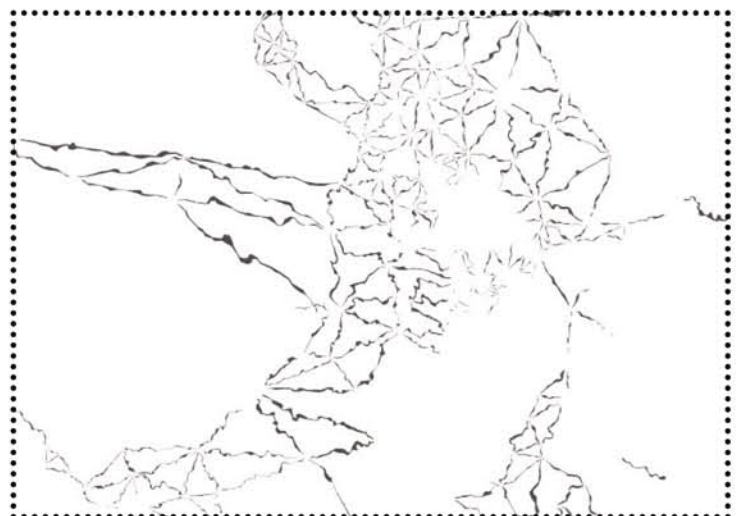
In the initial phase, all "organic" connections, which span the differently isolated communities, were mapped on a satellite image of the region.



The layout of each bridge-village respects the existing landscape, going around forests, rocks and water. The second phase will take place on the ground to take local opportunities and challenges into the scheme.

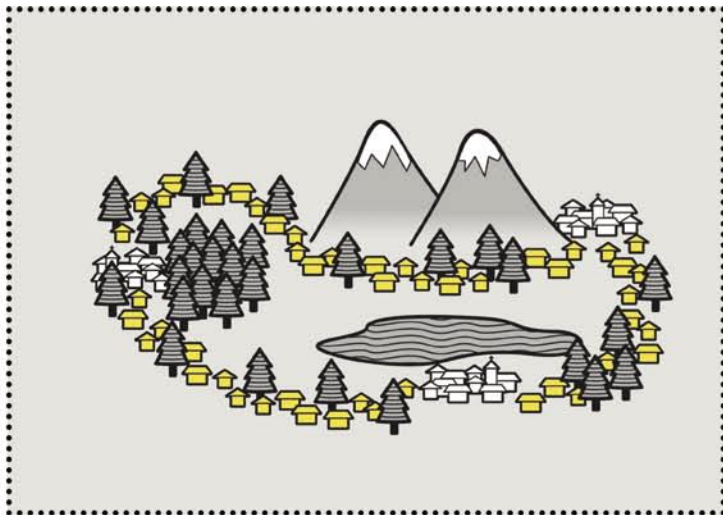


Above are all the bridges which need to be built to turn the weakly connected city into a strong, network city - visible from outer space!

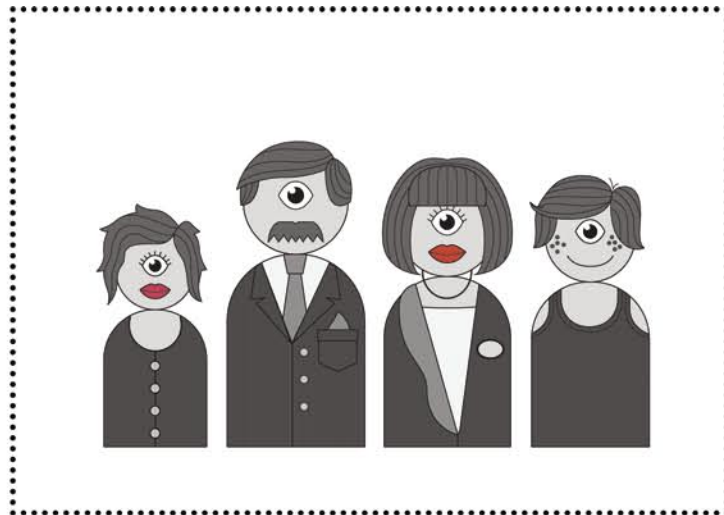


Informalism could characterize the new villages through time and place specific "participatory design". Formal and logical urbanism of connectivity would contrast with informal and organic home-made architecture.

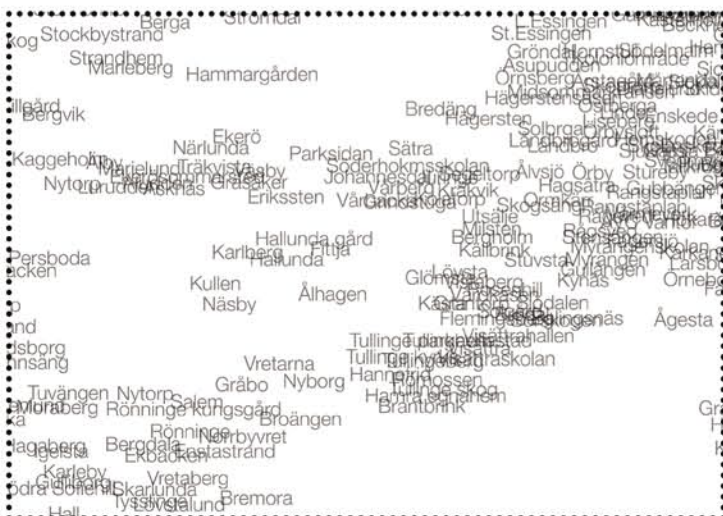




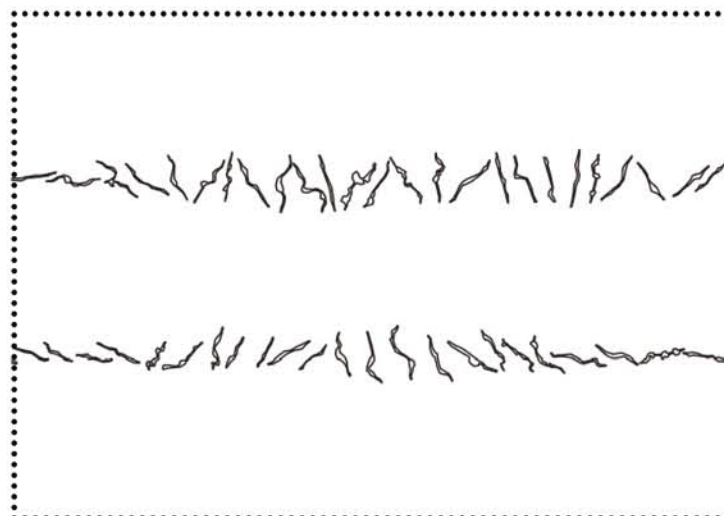
...we propose to connect them by letting them grow in the direction of the nearest village, like a collective slow motion hug in a romantic movie. This network of villages will enjoy holistic exchange.



With Stephen Hinton from Transition Sweden and the department of Bio-Diversity of the Uppsala University of Agricultural Sciences, we created a Self Sufficiency Ratio (SSR) which declares the area of 1 hectare enough for 4 people to be self-sufficient (edible landscapes).



A connection between localities Kullen and Näsby could be called Nälän or Kusby. Meaning a whole new generation of urbanism could emerge by connecting the identities of the existing villages, continuing the urban family tree of the location in focus.



All connections were organized by size in a "library of connections". All areas were calculated and added up. Together, the connections make up an area of 25,490 hectares.



With a map of old Rome by Piranesi pasted inside a bridge-village, we show that (almost!) any kind of architecture can be built to connect the existing suburbs. Connectivity first, architecture second. Urbanism is not dead!



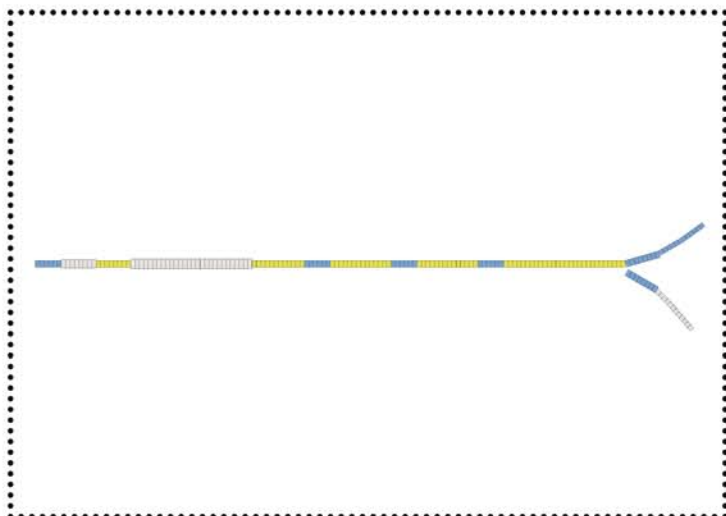
If we would use the population density of a low-rise, high-density Tokyo village for all new connections in Stockholm, the population would rise from 2 to 4,5 million. By using all courtyards between connections for food production, the region could be 28% self-sufficient.



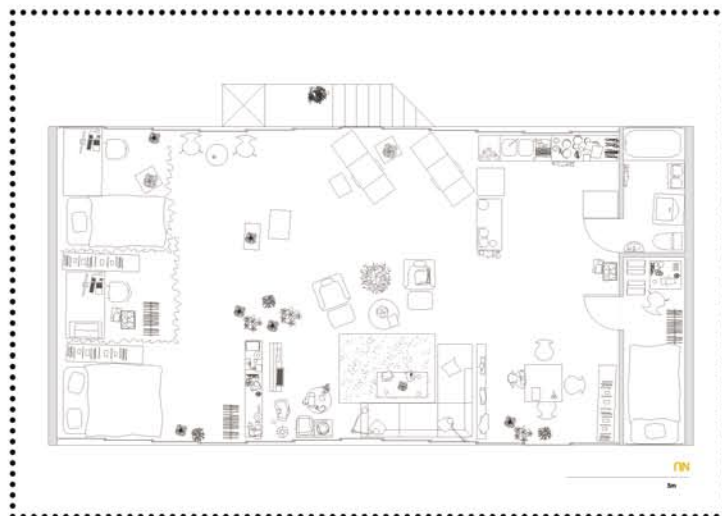
Using a local, lower urban density from the near suburb of Solhem inside all the same bridge-villages described before, and using the same urban agriculture courtyards between them, Stockholm can become 119% self-sufficient, feeding a population of 2,6 million people.



During the exhibition, Sweden had its general elections. For the first time a racist party was voted into the parliament. With this in the media landscape, Connecting-Stockholm gained even more relevance, encouraging human responsibility to stretch across virtual borders.



The pedestrian bridge was crossed over 1000 times during the 3 years which Balestra and Göransson lived in Lidingö. They imagined Stockholm's most incredible apartments inside the existing structure. The total area of 7560m<sup>2</sup> includes 1 and 2 story apartments.



Urban Nouveau propose three apartment-types, each with 112.5m<sup>2</sup>. Above, the informal apartment - the absence of walls declare full freedom for multipurpose usage and maximized communication through a large HOPEN space with full view towards east and west.



Building bridges in the Swedish Museum of Architecture.



1:50 working model of the HOPEN space apartment inside the old Lidingö bridge showing the cast-iron structure.

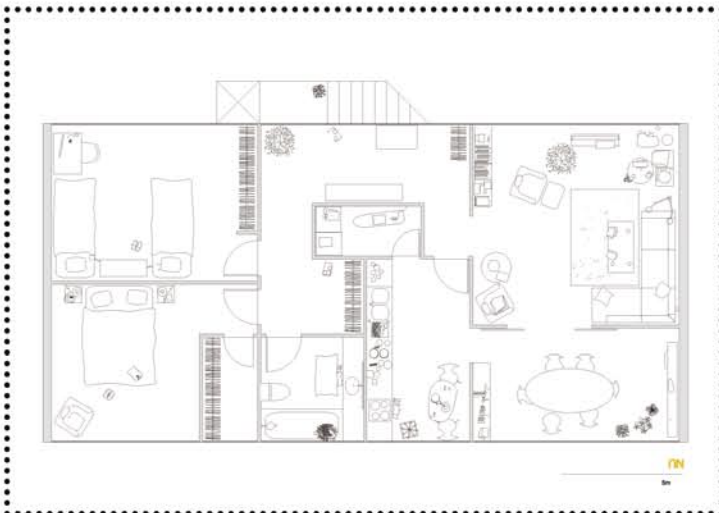




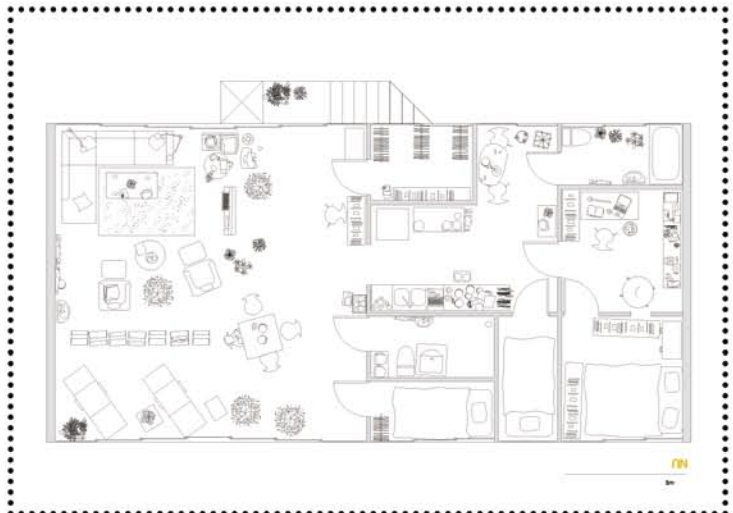
In June 2010, Sara Göransson went to visit Yona Friedman in his home and studio in Paris. After a long conversation about Connecting-Stockholm, Yona stated "the project is great but bridges over land are easy - much more interesting are inhabited bridges over water."



In tribute to Yona, Urban Nouveau dedicates the last chapter of this project and presentation with a proposal for inhabiting the old Lidingö bridge. The 750 meters long steel structure connects the island of Lidingö with mainland Stockholm.



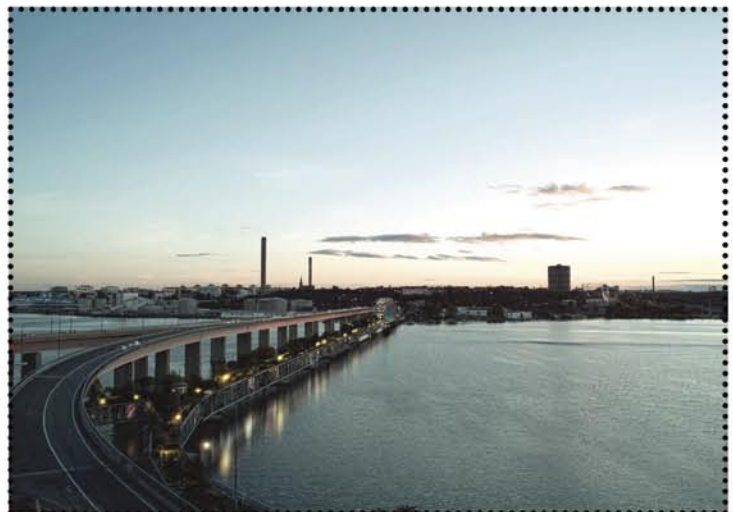
The formal apartment has walls dividing different functions i.e. kitchen, dining, living, bedroom, hall, iron room. Remember the water views through the glass on both sides. Private stairs and elevators give access to every apartment.



50%-50% apartment, for the strongest balance between the formal and the informal. Architecture may be used as a tool for behavioural evolution. Note that these are examples of what could happen inside the apartments. The user is free to customize to taste and need.



Stretching the concept of the High Line in NY, Urban Nouveau adds a public green landscape onto the roof of the apartments. The bridge becomes a social and active platform accessible to all. The width of the bridge allows for emergency vehicles to access every apartment.



The long facades of this bridge-village face both east and west, sunrise and sunset. If the tower became the architectural icon of the XX century, can the sleeping tower - present on the drawings of Madelon Vriesendorp - set the mood for XXI century interaction?





Connecting-Stockholm continues the diploma work of Sara Göransson, Local Act Global Change. Sara is the co-founder of the interdisciplinary experience platform Urban Nouveau. Above, where it all started at the Royal Institute of Technology, Stockholm, 2005.



Coming back from India after the design of the Incremental Housing Strategy in the urban villages of Pune together with the local people, Filipe Balestra was invited by the museum director to exhibit the work of Urban Nouveau in the Swedish Museum of Architecture.



It was decided Urban Nouveau would move its premises into the museum and "become" the exhibition. Following Paulo Freire's "Daring To Dream", invited guests and museum visitors co-created alternative realities for the future of Stockholm.



People from different parts of the world such as Trinidad and Tobago, India, USA, Japan, Canada, Denmark, France, Latvia and Portugal got together in Stockholm to become the global village itself. Different opinion gave birth to a process structured by ethics.



Urban Nouveau is currently in dialogue with municipalities and investors to co-create bridge-villages and continue the long term process of Connecting-Stockholm. Currently based in Lisbon, Urban Nouveau is preparing to launch a holistic strategy to consolidate Portugal. xxx



Urban Nouveau's team: Filipe Balestra and Sara Göransson with Justin Ware, Takuma Tsuji, Kathrine Rasmussen, Stephanie Edwards, Martinho Pita, Sophie Mønster Nykjær, João Albuquerque, Remy Turquin, Rebecka Gordan, João Esteves, David Relan, Kristina Börjesson, Karina Vissanova, Tiago Lucena.