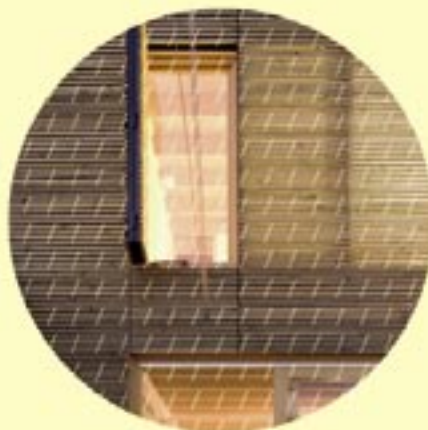




DOSSIER



IMPORT/EXPORT



# SENSITIVE MATTER:



## YOUNG CATALAN ARCHITECTS

"Sensitive Matter: Young Catalan Architects" is an exhibition of architectural works by young studios established in Catalonia which are not only from the same generation but, above all, share certain attitudes and ways of understanding and practising architecture.

It is also a personal gamble (and thus, it is necessarily biased and has a certain degree of risk). It can also be seen as a possible answer to two important questions: What will happen to architecture now that the current model is being questioned? And how can Catalan architecture contribute in the context of the global crisis?

An architecture with an ability to reinterpret prior models and references in order to provide new answers is demanded. A sensitive, honest architecture where people are more important than the construction itself or aesthetics, which assumes the limitations of the context, the place, the commission and the available and transforms them into opportunities. Local architectures for a global world. Architecture that is sensitive to its roots, changes and how is lived and perceived by the people and its users.

[WWW.MATERIASENSIBLE.CAT](http://WWW.MATERIASENSIBLE.CAT)





# CRITIC/ RUI MENDES

## THE CONTEMPORARY CONDITION AND THE NEW PARADIGMS

In this selection of works by young Catalan architects, we can perceive principles, positions and purposes that reveal convergences in the time and space in which they operate. The disquiet facing the economic and social crisis we are going through is at the origin of this thorough work of selection and organization by the trio of Catalan architects Pere Buil, Carlos Cámara and Joan Vitoria.

The political, social and economic conditions and contexts specific to each period in history necessarily lead to the evidence that new times show new knowledge, which can be expressed as 'thought and construction'.

The lucidity of these architectures is chiefly related with the capacity to put things into context, to develop a thought-action from their particular work conditions. This means that, rather than trying to construct an axiology of the universe, with a predetermined order of values, they prefer to operate case by case, transforming the elements they have access to. These operations are strengthened by planning strategies according to the conditions and resources of each commission.

## COMMON FEATURES / SINGULAR APPROACHES

The evidence of the materials and the particular attention to the building processes represent what these architectures have in common. In their

operative and aesthetic dimension, they are not limited to the construction of space, being also committed to the intimate definition of the atmosphere. If thoughts on Economy and Ecology, as in a holistic view of the construction-use-reuse process, are predominant themes in these works, we are also able to see – especially in the wider context of the presentations in Lisbon – that these thought processes depart from different approaches: A more strategic perspective, whether departing from a topic of reference, such as in the projects of Harquitectes and T&A Arquitectes, or from the focus on the biography of the original building towards a history of continuity relationships, such as in the proposals by Núria Salvadó + David Tapas and Bosch.Capdeferro; An approach based on the relationship between energy efficiency social engagement, such as in the buildings by Josep Bunyesc and DataAE, or based on the environment qualification supported by the building features and drawing, such as in the projects by David Sebastian + Gerard Puig and unpanel d'arquitectes; A more experimental dimension (material and sensorial) in the works by Francisco Cifuentes and Emiliano López + Mónica Rivera.

## NOTES AND STRONG SENSATIONS

Of all these works, the public projects (museum, hotel, cultural centre, school) or hybrids (house-studio, shed-studio) are the ones which show, in tandem with the material characterization, more

unexpected solutions on spatial relationships.

If a greater conceptual control of the building ensures a greater cost control and promotes a better social and collective awareness, the combination of programs and consequent juxtaposition and mutation of uses provide, important contributions for the dissolution of prejudices associating space to function.

Viewed as a whole, the works by this group of architects emerge as cohesive and communicate renewed experiments for a reality in change (also in Catalonia). Paraphrasing Jacques Derrida, "We need to write in the margins". There is no need for great texts; what we need is notes and strong sensations prompting us to remember and reflect upon a certain page. We will be looking forward to new sensations coming from Catalonia.

## Rui Mendes

Rui Mendes (Lisbon, 1973) is a graduated architect by Universidade Lusíada de Lisboa. He has a studio in Lisbon, and his work has been published in several architecture magazines. He is the author of articles and essays published in specialized journals, such as "De Bildung ao Grand Tour: a viagem como conhecimento" (JA 227 FÉRIAS, OA, 2007). He has regularly been giving academic seminars (DA/UAL, OA/ISCTE), as well as working as a curator (EXTRA JA, 2007) and researcher (IAPXX-CA). He has been Project teacher since 2009 and Architecture Theory and History teacher from 2010 at the Universidade Autónoma de Lisboa. [rui Mendes.com](http://rui Mendes.com)

# CURATORS/

## Pere Buil (1973)

Architect by ETSAB (Barcelona, 2000). Founder of vora arquitectura, an architectural studio located in Barcelona and Lisbon. Their works have been published in several international magazines. They have been awarded with, among others, Sonapiata and Arco Prize, and selected for Arquia/próxima 2010. He is curating, since 2008, "Estacions transformadores", a platform of monthly talks about architecture located in Nau Ivanow. He's been teaching in ESARQ (Barcelona) in the Taller Vertical 2009 directed by Emilio Tuñón and Luis M. Mansilla. He is currently teaching Project Design at ETSAB (Barcelona) and at MBIArch post-professional master's degree program of the BIArch (Barcelona).

## Carlos Cámara (1980)

Architect by ETSAB (Sant Cugat, 2004). He combines the architectural profession with experimentation of informatics and communication applied to architecture. Currently teaching at Universidad de San Jorge (Zaragoza) and consultant at Escola Bert-COAC. He has founded and developed ArchTLAS ([www.archtlas.com](http://www.archtlas.com)), a collaborative online atlas of architecture, and has worked in Scalae, where he co-curated the exhibition "44 young architects" and directed the magazine ArquitecturaPlus edited by Grupo Vía from 2007 and 2008. He has been guest teacher at ESARQ (Barcelona) in the Taller Vertical 2009 directed by Emilio Tuñón and Luis M. Mansilla.

## Joan Vitoria (1973)

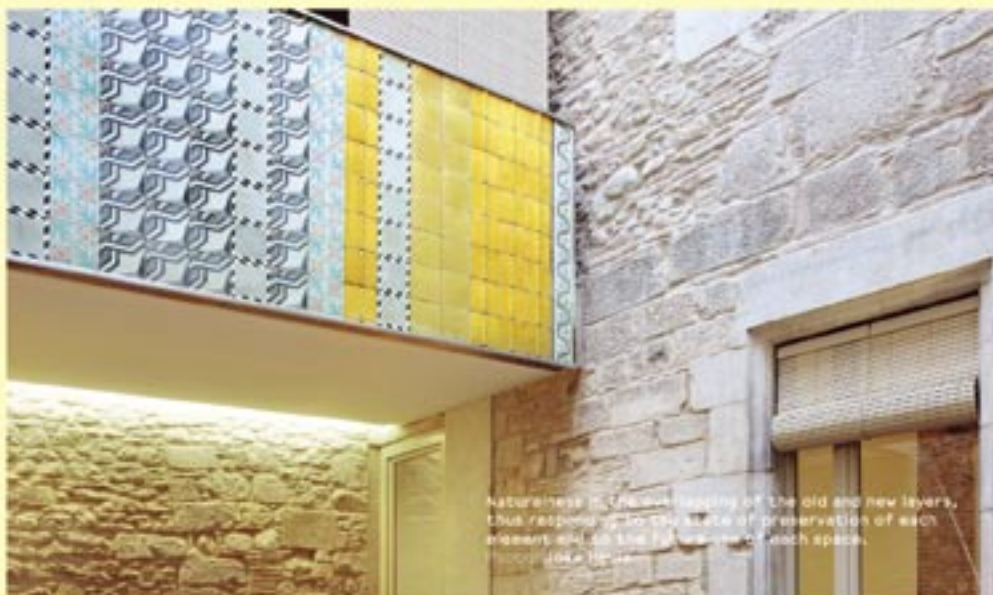
Architect by ETSAB (Barcelona, 2001). He has worked on his own and also for several studios in Barcelona and Paris. Since 2007 he teaches Project Design at the ESARQ (Barcelona), where he's also co-organizer of the Foros ESARQ and coordinator of the Culture and Publications Department. Since 2005 he also works in the vulgarization of architecture, organizing all kind of activities (workshops, visits, exhibitions...) first from the COAC's Educational Department (BEA) and afterwards from the group "El globus veraneu", who has collaborated with different cultural centers in Barcelona (Fundació Joan Miró, La Pedrera, DRUB,...).



# ARQUITECTURES. BOSCH.CAPDEFERRO/ CASA COLLAGE

WWW.BOSCHCAPDEFERRO.NET

Ramon Bosch (Girona, 1974) and Bet Capdeferro (Girona, 1970) are graduate architects by the ETSA8 (Barcelona). In 2003 they founded the office arquitectures.bosch, capdeferro in Girona. Their professional activity has progressed in parallel to teaching in Barcelona, Zurich, and Girona. At present they are working on the development of prefabricated systems for buildings of state schools. They were finalists at the FAD Awards 2005, and their work has been chosen in different rounds of Barcelona's Biennial of Landscape Architecture. In 2002 they received the AJAC Young Architects' Award and in 2010 they won Girona's Architecture Award.



Natureness is the interlacing of the old and new layers, thus responding to the state of preservation of each element and to the history of each space.

Photo: J. A. G. G. G.

Location  
Girona  
Programme  
Housing  
Year  
2005 (project)  
2009 (completion)  
Area  
1.515 m<sup>2</sup>

# DATAAE/ CASA UNIFAMILIAR ENTRE MITGERES

WWW.DATAAE.COM

dataAE is a multidisciplinary studio founded in 2000 by Claudi Aguiló (1972) and Albert Domingo (1975). They have won several architecture and landscape competitions. Amongst others, they were awarded the FAD Opinion Award 2007, were finalists at the Catalonia Construction Awards 2008 and were selected at Young Spanish Architects 2008 and at the Spanish Architecture Biennial 2009. Claudi Aguiló is architect (ETSAV, 2001), researcher assistant grant 2002-06 and associated teacher in "building technologies" Department since 2006. He has also collaborated in several universities and workshops. Albert Domingo is industrial engineer (ETSEIB, 1999) and Master in Project Management of Building and Urbanism.



The courtyard allows the living room to benefit from southern orientation but maintains privacy from the street and also illuminates the centre of the ground floor.

Photo: Adria Goua

Location  
Sant Feliu de Llobregat (Barcelona)  
Programme  
Housing  
Year  
2005 (project)  
2005-06 (construction)  
Area  
183 m<sup>2</sup>



# DAVID SEBASTIAN + GERARD PUIG/ ESCOLA BRESSOL

[HTTP://TINYURL.COM/SEBASTIAN-PUIG](http://tinyurl.com/sebastian-puig)

David Sebastián and Gerard Puig (1973) are graduate architects by the ETSAB (Barcelona, 2001). David Sebastián completed his education with Carme Pinós and Gerard Puig with Aymerich-Salvadó. Sharing office since 2006, they have won different architecture competitions and have been invited to show their work at the Architectures Sense Lloc (Never Built Architecture) exhibition (Barcelona) and at the ETSAR (Reus, Catalonia). Since 1999 David Sebastián has taught at the Architecture School in Talca (Chile), at the EDRA Art and Design School (Rubí) and at the EINA Art and Design School (Barcelona). Since 2003 Gerard Puig has also been teaching at the EDRA School.

Location  
Vilanova del Vallès (Barcelona)  
Programme  
Nursery & Social Center  
Year  
2008-2009 (project)  
2009-2010 (construction)  
Area  
647 m<sup>2</sup> (interior) + 713 m<sup>2</sup> (exterior)



# FRANCISCO CIFUENTES/ ESTUDI PER A UN PINTOR

[HTTP://TINYURL.COM/FRANCISCOCIFUENTES](http://tinyurl.com/franciscocifuentes)

Francisco Cifuentes (1977), architect by the ETSAB (Barcelona), has collaborated in several offices in Mallorca, Barcelona and Porto. Since 2002 he has his own office and works on projects and researches about architecture and urbanism. He is currently working in his PhD thesis about "Guillem Sagrera's Llotja". He is a visiting teacher of Design and Drawing at the ETSAR (Architecture School in Reus). He has received several awards such as Mallorca Architecture Award 2004-2006 (COAIB 2007) and the Opinion Prize at the Foro Arquia/Próxima 2008 (Caja de Arquitectos, Valencia). Finalist in the FAD Awards 2007. His work has been published in several specialized magazines.

Location  
Palm de Mallorca  
Programme  
Painting workshop  
Year  
2003 (completion)  
Area  
105 m<sup>2</sup>





# H ARQUITECTES/ GIMNÀS 704

WWW.HARQUITECTES.COM

HARQUITECTES is a studio created in 2000, placed in Sabadell and led by four architects: David Lorente (1972), Josep Ricart (1973), Xavier Ros (1972) and Roger Tudó (1973). They are graduated by the ETSAB (Sant Cugat) between 1998 and 2000, where they are teaching Design and Construction. Their projects have received several awards of both: finished works and projects. They have been also selected in exhibitions and invited as lecturers in Europe and America.

Location  
Barberà del Vallès  
Programme  
Public school's gymnasium  
Year  
2007 (project)  
2008 (construction)  
Area  
453 m<sup>2</sup>



A simple prismatic space, only altered by the slope of the roof, which is parallel to the center's access ramp, and by the corner porch.  
Photo: Adrià Gual

# JOSEP BUNYESC/ CASA PASSIVA ARBORETUM

WWW.BUNYESC.COM

Josep Bunyesc (1979), Architect by the ETSAB (Barcelona, 2003). Final project developed in Lausanne with Bakker and Blanc architects. Master of Advanced Studies in Sustainable Architecture. Working on his Doctorate about Sustainable Architecture, economy of energy and habitability in rural areas and European PhD student collaborating with EPFL Laboratoire d'énergie Solaire. He has written several articles on sustainability and traditional construction and has lectured in several courses and conferences. Among his works stands out the rehabilitation and improvement of the energetic efficiency of several traditional buildings in the Pyrenees and the "Passiv House" with wooden structure and wool isolation.

Location  
Lleida  
Programme  
Private house  
Year  
2009



An innovative work due to the used construction method, flexible and adaptable to other uses and building formats, made of big-format prefabricated wooden elements using mechanic joints.  
Photo: Josep Bunyesc



# EMILIANO LÓPEZ + MÓNICA RIVERA/ HOTEL AIRE

WWW.LOPEZ-RIVERA.COM

Emiliano López (1971) studied at the ETSAV (Sant Cugat) and has a Masters of Architecture from Harvard University. He is currently Assistant Professor at the ETSAV.

Mónica Rivera (1972) studied Fine Arts and Architecture at the Rhode Island School of Design and has a Masters of Architecture from Harvard University.

They set up their professional practice in Barcelona in 2001. Among other recognitions, their work has received the FAD Award of Architecture 2008, the AR Awards for Emerging Architecture 2008 and the Young Award of the X Spanish Architecture and Urbanism Biennial in 2009.

Location

Tudela (Navarra)

Programme

Hotel

Year

2004 (project)

2006-07 (construction)

Area

1500 m<sup>2</sup>



The interior and the landscape are related by a design close to the rural architecture of the area, with a modern and minimalist approach.

# NÚRIA SALVADÓ + DAVID TAPIAS/ CASA 'CINE LÍDIA'

WWW.CAMPDAVELLANERS.COM / WWW.AIXOPLUC.NET / WWW.NURIASALVADO.COM

Núria Salvadó (1974), David Tapias (1973). Their works have received several prizes such as the Alejandro de la Sota Biennial (2005 and 2007), the COA Aragón Award (finalists), the Alejandro de la Sota Biennial 2009 (finalists) and the "400,000 dwellings" international competition organized by COAC and Guaderns (2nd prize). They have also been exhibited at the Venice Architectural Biennial (2000 and 2008), Foro Arquia/Próxima 2008, "Architecture Catalane 2004-2009" (Paris, 2009) and "Arquitectures sense lloc" (Barcelona, 2009). Núria is doing her PhD "Inhabited Intervals" and teaching at ETSAR (Reus). David is doing his PhD about Jean Prouvé's House (Nancy) and is also teaching at ETSAR (Reus).

Location

Riudecols (Tarragona)

Programme

House for an artist

Year

2003-2004 (project)

2005-2007 (construction)

Area

185 m<sup>2</sup>



How to live in an old cinema feeling well (to get enough sunlight, not to get cold in winter,...) spending the minimum money? Building a house inside a house. Building microclimates.  
Photos: José Revilla

# TED'A/ MUSEU DEL MOLINAR

WWW.TEDARQUITECTES.COM

TED'A arquitectes is a studio founded in 2006 by Irene Pérez (1976), Raimon Farré (1976) and Jaume Mayol (1976). All of them are architects by the ETSAV (Sant Cugat) (2000–2001). The studio is placed between Majorca and Barcelona.

TED'A is a workshop and also a studio. They combine theoretical activity with professional practice.

Their work has been recognized and honored several times: Mallorca Architecture Award 2004–2006, Forc Arquia Próxima 2008 and 2010, and World Architecture Awards 2009 among others.

Location  
Montuiri (Mallorca)  
Programme  
Museum & Square  
Year  
2004–2005 (project)  
2007–... (construction)  
Area  
1087 m<sup>2</sup>



The semi buried building generates a square above of it. The entrance volume is constructed in concrete, smooth in the inner side and very rough on its outside.  
Photo: TED'A

# UNPARELL D'ARQUITECTES/ EL PIS D'EN QUIM

WWW.UNPARELLDARQUITECTES.CAT

Eduard Callís (Olot, 1977) and Guillem Moliner (Barcelona, 1979) graduated at the ETSAV (Sant Cugat) and ETSAB (Barcelona). They share projects and concerns, and work together since 2004. Eduard collaborates with Quaderns d'Arquitectura and with the research group Habitar, from UPC. Guillem teaches at the School of Art in Olot. Their working experience is still short, but intense.

Location  
Olot (Garrotxa)  
Programme  
Apartment, refurbishment  
Year  
2007–2010  
Area  
60 m<sup>2</sup>



This generous space keeps its central part empty while around its perimeter there are areas designed for the different activities of the house.  
Photo: Espai Androna



IMPORT/EXPORT

# SENSI- TIVE MA- TTER:

YOUNG  
CATALAN  
ARCHITECTS

[WWW.MATERIASSENSIBLE.CAT](http://WWW.MATERIASSENSIBLE.CAT)

"IMPORT/EXPORT" is a network which aims to provide more visibility to local architecture by young European architects. Through exhibitions and talks, it promotes the discussion on the present challenges of architecture.

"Sensitive Matter: Young Catalan Architects" is the first exhibition of this network.

[info@materiasensible.cat](mailto:info@materiasensible.cat)

**Promoter:**

Pedro Duarte Bento & Nogo  
[www.nogo-studio.blogspot.com](http://www.nogo-studio.blogspot.com)

NOGO is a project-room and think-tank platform for Architecture & Contemporary Art based in Lisbon, Portugal. Its goal is the creation of cultural contents and the disclosure and exhibition of new production on Visual Arts and Emergent Architecture, both at national and international levels. NOGO proposes a dynamic and diversified program producing lectures, screenings, exhibitions, happenings and publications on artistic, architectural, experimental and research projects. NOGO is a registered brand, and a non-profit cultural association founded by Pedro Duarte Bento in 2009.

**Curators:**

Pere Buil  
Carlos Cámara  
Joan Vitoria

**Film:**

Adriana Salvat

**Exhibition design:**

vora arquitectura  
[www.vora-arquitectura.com](http://www.vora-arquitectura.com)

**Graphic design:**

toornix  
[www.toornix.com](http://www.toornix.com)

**Communication:**

Laura Bayo

**SPONSORS:**

 **institut  
ramon llull**  
Catalan Language and Culture

**SUPPORT:**

 **COAC**  
Círculo de Arquitectos de Cataluña

 **ajac**  
Associação de Jovens Arquitectos de Portugal



 **wonderland**  
Cultural Center